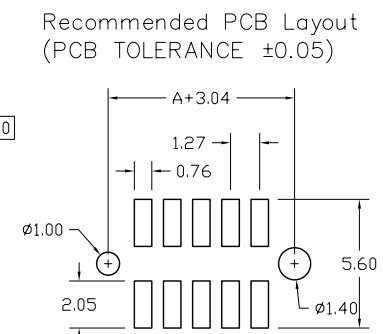
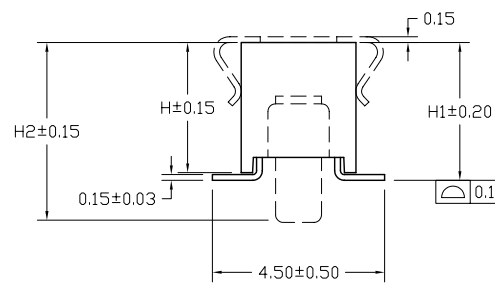
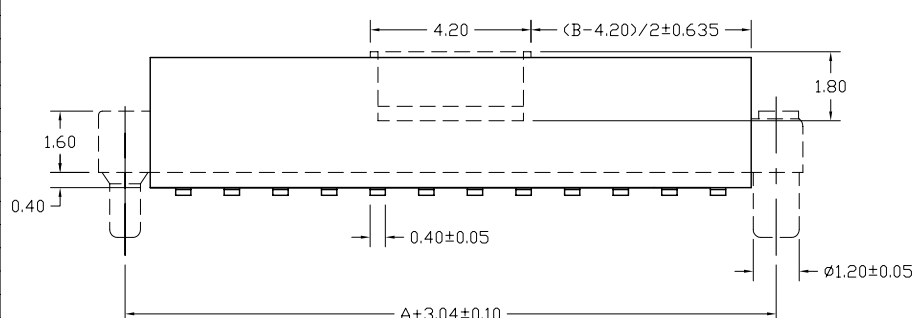
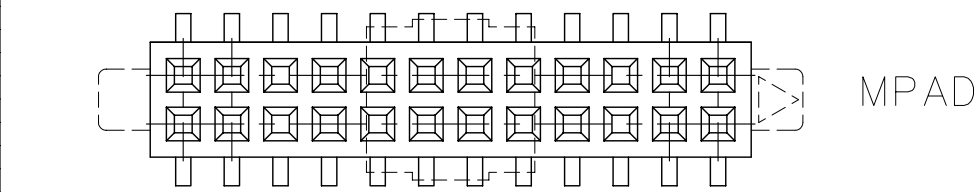
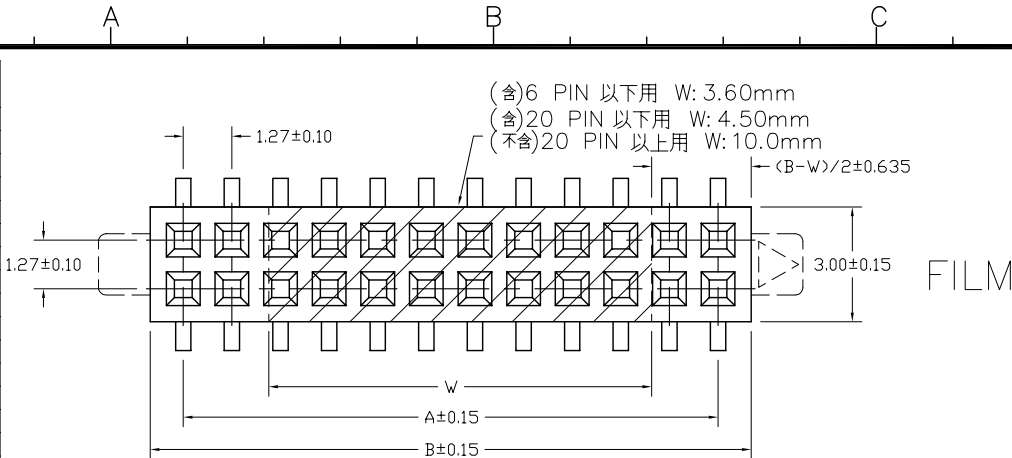


No. of Contacts	DIMENSIONS		REMARK (備註)
	A	B	
6	2.54	4.27	○
8	3.81	5.54	○
10	5.08	6.81	○
12	6.35	8.08	○
14	7.62	9.35	○
16	8.89	10.62	○
18	10.16	11.89	○
20	11.43	13.16	○
22	12.70	14.43	○
24	13.97	15.70	○
26	15.24	16.97	○
28	16.51	18.24	○
30	17.78	19.51	○
32	19.05	20.78	○
34	20.32	22.05	○
36	21.59	23.32	○
38	22.86	24.59	○
40	24.13	25.86	○
42	25.40	27.13	○
44	26.67	28.40	○
46	27.94	29.67	○
48	29.21	30.94	○
50	30.48	32.21	○
52	31.75	33.48	○
54	33.02	34.75	○
56	34.29	36.02	○
58	35.56	37.29	○
60	36.83	38.56	○
62	38.10	39.83	○
64	39.37	41.10	○
66	40.64	42.37	○
68	41.91	43.64	○
70	43.18	44.91	○
72	44.45	46.18	○
74	45.72	47.45	○
76	46.99	48.72	○
78	48.26	49.99	○
80	49.53	51.26	○
82	50.80	52.53	○
84	52.07	53.80	○
86	53.34	55.07	○
88	54.61	56.34	○
90	55.88	57.61	○
92	57.15	58.88	○
94	58.42	60.15	○
96	59.69	61.42	○
98	60.96	62.69	○
100	62.23	63.96	○



**SPECIFICATIONS**

Current Rating: 1 Amp  
 Insulator resistance: 5000 Megohms min.  
 Contacts resistance: 20 m ohms max.  
 Dielectric withstanding: AC 500 V  
 Operating Temperature: -40~+105°C  
 Contact Material: Phosphor bronze  
 Insulator Material: High Temperature Thermoplastic, UL 94V-0  
 Color : Black  
 Finish: Gold plated  
 ©Standard: Gold flash all over

SQPOFZ-XXXX-X-X-\*

Number of Contacts

Definition	Code
Height:H	S1
3.6mm	S2
4.5mm	

NULL:TUBE (W/O FILM MPAD)  
 C:FILM+REEL  
 C1:FILM+REEL(500PCS)  
 F:FILM+TUBE  
 E:MPAD+TUBE  
 B:MPAD+RELL  
 K:REEL

0:W/O Locating peg  
 1:With Locating peg

Contact Plating

Definition	Code
◎ Tin plated:	A
◎ Gold plated:	
flash B 15μ" F	
10μ" E 30μ" J	
◎Duplex plating:	
flash K 15μ" P	
10μ" N 30μ" U	
◎Standard: B	
◎Prefix "V" means lead free plating.	

Recommended PCB Layout  
 (PCB TOLERANCE ±0.05)

	H	H1	H2
○	3.40	3.60	4.70
◎	4.30	4.50	5.60

Diagram	Molding description	Rev.	ECN Number	Description	Drawn	Date
○	mass production & assemble mold	5	EC2-530162	新增"C1"包裝代碼	陳美竹	03/09'05'
◎	sample & assemble mold	6	EC2-540470	新增包裝代碼	陳賜農	04/20'05'
⊕	mass production & fix mold	7	EC2-580021	修正規格說明	詹益東	08/04'05'
⊕	sample & fix mold					



GENERAL TOLERANCE		SCALE	ORIGINAL DRAWN	DATE	DWG. NO.	TITLE	REV.
XX. ± 0.50	XXX. ±	5=1	陳顯鑫	12/29'04'	X-XX	成品規格圖	7
X. ± 0.30	.XXX ±	UNIT	林錫錦	DATE	F:\DWG\CDWG\SQPOFZ\QPOFZMOR.DWG		SHEET
.X ± 0.25	.X. ± 4°	MM	林錫錦	08/04'05'	PARTS NO.		1/1
.XX ± 0.20	.X. ± 4°	SIZE	林錫錦	08/04'05'	SQPOFZ-XXXX-X-X-*		