

No. of Contacts	DIMENSIONS	
	A	B
2	2.00	4.00
3	4.00	6.00
4	6.00	8.00
5	8.00	10.00
6	10.00	12.00
7	12.00	14.00
8	14.00	16.00
9	16.00	18.00
10	18.00	20.00
11	20.00	22.00
12	22.00	24.00
13	24.00	26.00
14	26.00	28.00
15	28.00	30.00
16	30.00	32.00
17	32.00	34.00
18	34.00	36.00
19	36.00	38.00
20	38.00	40.00
21	40.00	42.00
22	42.00	44.00
23	44.00	46.00
24	46.00	48.00
25	48.00	50.00
26	50.00	52.00
27	52.00	54.00
28	54.00	56.00
29	56.00	58.00
30	58.00	60.00
31	60.00	62.00
32	62.00	64.00
33	64.00	66.00
34	66.00	68.00
35	68.00	70.00
36	70.00	72.00
37	72.00	74.00
38	74.00	76.00
39	76.00	78.00
40	78.00	80.00

Pin type  
 Brass  
 Brass(Reel)  
 Phosphor Bronze  
 ©Standard: L

Number of Contacts

XYT-XXS1-X-C/D-\*

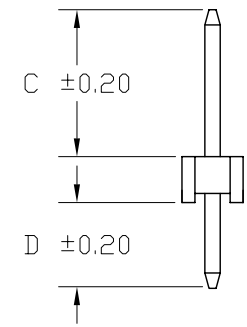
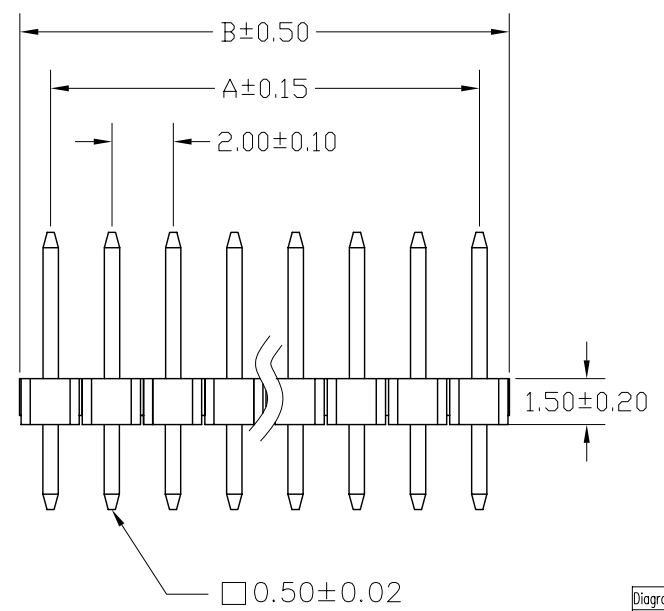
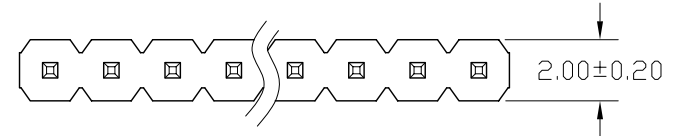
NULL: POLT BAG  
 G: TUBE

Contact Plating

Definition	Code
◎ Tin plated:	A
◎ Gold plated:	
flash B	15μ" F
10μ" E	30μ" J
◎ Duplex plating:	
flash K	15μ" P
10μ" N	30μ" U
◎ Standard: B	
◎ Prefix "V" means lead free plating.	

**SPECIFICATIONS**

Current Rating: 1 Amp  
 Insulator resistance: 5000 Megohms min.  
 Dielectric withstanding: AC 500 V  
 Operating Temperature: -40°~+105°C  
 Contact Material: Copper Alloy  
 Insulator Material: High Temperature Thermoplastic, UL 94V-0(Nylon-6T)  
 Color : Black



◎For illustration purpose the XYT-XXS1-X-048/028 was shown

Recommended PCB Layout (PCB TOLERANCE ±0.05)

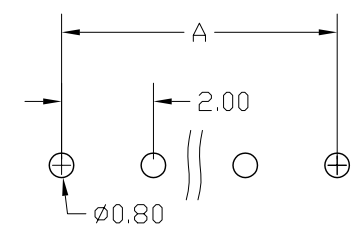


Diagram	Molding description	Rev.	ECN Number	Description	Drawn	Date
○	mass production & assemble mold	12	EC2-530212	新增料號 XYT-XXS1-X-025/025	陳顯鑫	03/08 05'
◎	sample & assemble mold	13	EC2-550250	新增料號 XYT-XXS1-X-040/040	陳美竹	05/20 05'
⊕	mass production & fix mold	14	EC2-550272	新增料號 XYT-XXS1-X-125/030	陳顯鑫	05/26 05'
⊕	sample & fix mold					

DATE 16-12-03'	DWG. NO. 2-21	TITLE	REV. 14
DATE 05/26 05'	F:\DWG\CDWG\TY\TYS2P.DWG	2.0mm HEADER	SHEET 1/2
DATE 05/26 05'	PARTS NO. XYT-XXS1-X-C/D-*	(成品規格圖)	



GENERAL TOLERANCE		SCALE 4=1	ORIGINAL DRAWN 陳美竹
XX. ± 0.40	XXX. ±	UNIT MM	CHECK 林錫錦
X. ± 0.25	.XXX ±	SIZE A4	APPROVE 林錫錦
.X ± 0.15	X.° ± 3°		
.XX ± 0.10	.X° ± 3°		