

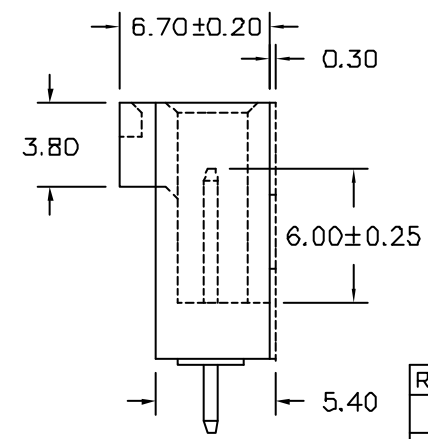
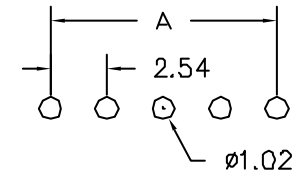
Pin type XPHI-XXS-X-030-X-X
 Brass (Reel) L B P
 Phosphor Bronze
 ◎ Standard: L
 Number of Contacts
 顏色: 黑(A), 綠(B), 黃(C), 白(D)
 Contact Plating

Definition	Code
◎ Tin plated:	A
◎ Gold plated:	
flash B 15μ"	F
10μ" E 30μ"	J
◎ Duplex plating:	
flash K 15μ"	P
10μ" N 30μ"	U
◎ Standard: B	
Prefix "V" means lead free plating.	

MARK	材質	側邊透氣孔	No. of Contacts
A	有 P.B.T	有	04
B	有 Nylon-6T	有	
C	有 P.B.T	無	
D	有 Nylon-6T	無	
E	無 P.B.T	有	02~04
F	無 Nylon-6T	有	
G	無 P.B.T	無	
H	無 Nylon-6T	無	

SPECIFICATIONS
 Current Rating: 3 Amps
 Insulator resistance: 5000 Megohms min.
 Dielectric withstanding: AC 500 V
 Operating Temperature: -40~+105°C
 Contact Material: Copper alloy
 Insulator Material: Thermoplastic, UL 94V-0(PBT)
 Color: Black
 Finish: Gold plated
 ◎ Standard: Gold flash all over

Recommended PCB Layout
 (PCB TOLERANCE ±0.05)



No. of Contacts	DIMENSIONS			REMARK (備註)
	A	B	C	
2	2.54	7.62	5.62	○
3	5.08	10.16	8.16	○
4	7.62	12.70	10.70	○

Rev.	ECN Number	Description	Drawn	Date
2	EC2-470698	新增無鉛電鍍說明	陳美竹	07/30/04'
3	EC2-4B0075	圖面新增說明	洪銀雲	11/09/04'
4	ECR-4C0071	修正選項說明	陳國森	12/24 04'



GENERAL TOLERANCE		SCALE
XX. ± 0.50	XXX. ±	1=1
X. ± 0.30	.XXX ±	UNIT MM
.X ± 0.25	.X° ± 4°	SIZE A4
.XX ± 0.20	.X° ± 4°	

ORIGINAL DRAWN	林秋蘭	DATE	25/10/00'
CHECK	江坤容	DATE	12/24 04'
APPROVE	林錫錦	DATE	12/24 04'

DWG. NO.	X-XX	TITLE	2.54mm SHROUDED HEADER (成品規格圖)	REV.	4
F:\DWG\CDWG\PHI\PHISOA.DWG				SHEET	1/1
PARTS NO.	XPHI-XXS-X-030-X-X				