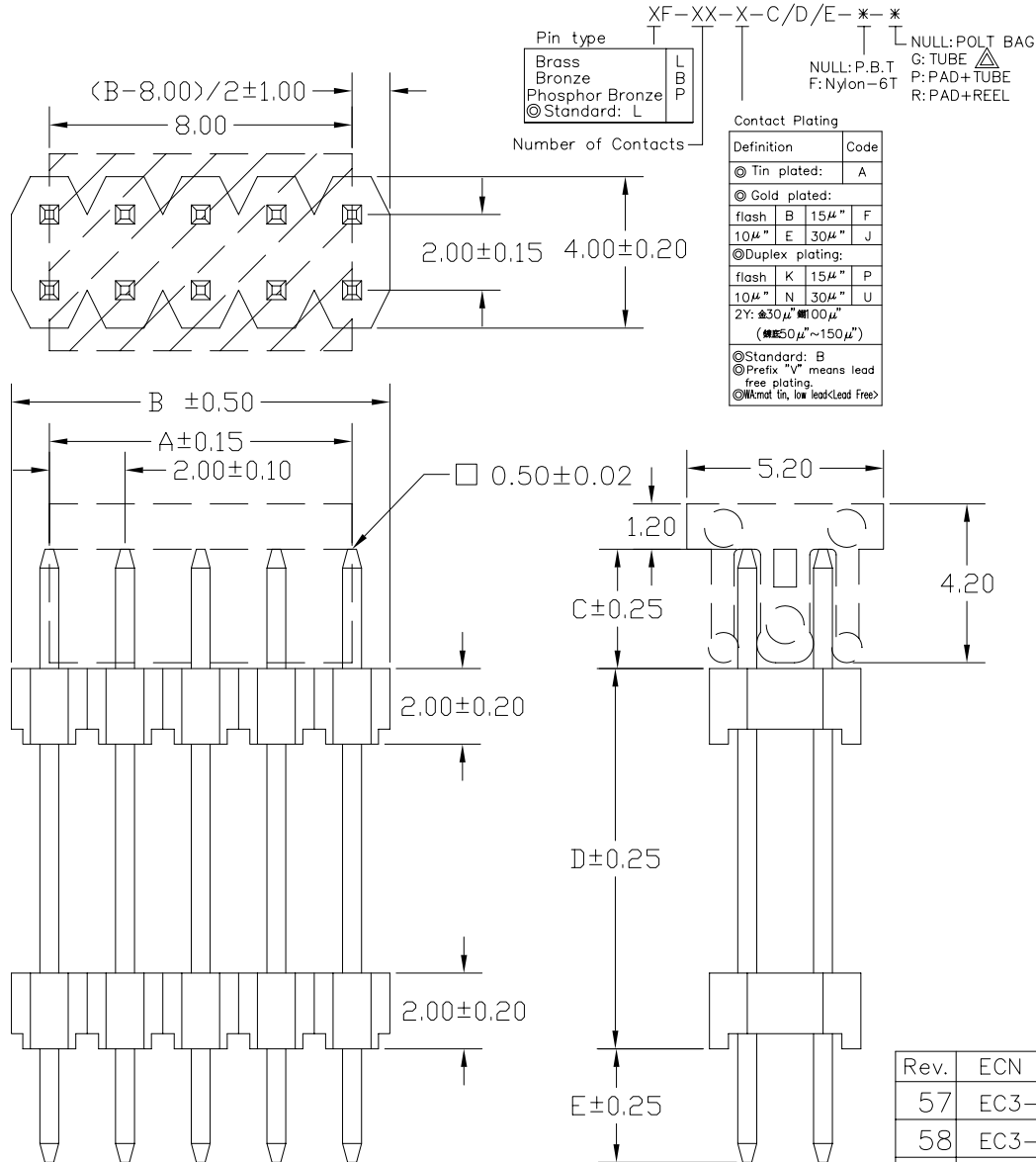


No. of Contacts	DIMENSIONS		REMARK (備註)
	A	B	
4	2.00	4.00	○
6	4.00	6.00	○
8	6.00	8.00	○
10	8.00	10.00	○
12	10.00	12.00	○
14	12.00	14.00	○
16	14.00	16.00	○
18	16.00	18.00	○
20	18.00	20.00	○
22	20.00	22.00	○
24	22.00	24.00	○
26	24.00	26.00	○
28	26.00	28.00	○
30	28.00	30.00	○
32	30.00	32.00	○
34	32.00	34.00	○
36	34.00	36.00	○
38	36.00	38.00	○
40	38.00	40.00	○
42	40.00	42.00	○
44	42.00	44.00	○
46	44.00	46.00	○
48	46.00	48.00	○
50	48.00	50.00	○
52	50.00	52.00	○
54	52.00	54.00	○
56	54.00	56.00	○
58	56.00	58.00	○
60	58.00	60.00	○
62	60.00	62.00	○
64	62.00	64.00	○
66	64.00	66.00	○
68	66.00	68.00	○
70	68.00	70.00	○
72	70.00	72.00	○
74	72.00	74.00	○
76	74.00	76.00	○
78	76.00	78.00	○
80	78.00	80.00	○



SPECIFICATIONS

Current Rating: 1 Amp
 Insulator resistance: 5000 Megohms min.
 Dielectric withstanding: AC 500 V
 Operating Temperature: -40°~+105°C
 Contact Material: Copper Alloy
 Insulator Material: Thermoplastic, UL 94V-0 or High Temperature (See P/N Option)

Finish: Tin, Gold or Duplex plated
 ◎ Standard: Gold flash all over
 ◎ Note:
 Duplex plating: gold plated on contact area, Tin on solder area
 Harmful material should be compliant to Doc"EI-0005"Standards.

Recommended PCB Layout
 (PCB TOLERANCE ±0.05)

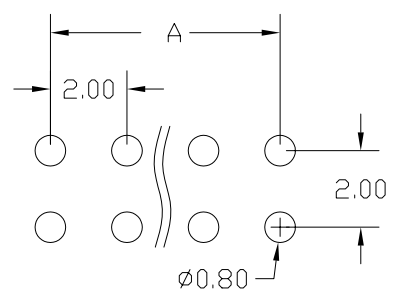


Diagram	Molding description
○	mass production & assemble mold
◎	sample & assemble mold
⊕	mass production & fix mold
⊕	sample & fix mold

Rev.	ECN Number	Description	Drawn	Date
57	EC3-630039	補增XF-xx-x-035/060/035-*	詹益東	03/10 06'
58	EC3-640110	新增XF-xx-x-070/127/070-*	詹益東	05/04 06'
59	EC3-650061	新增包裝代碼 G: TUBE	詹益東	05/17 06'



GENERAL TOLERANCE		SCALE	ORIGINAL DRAWN	DATE
XX. ± 0.50	XXX. ±	1=1	林秋蘭	24-08-01'
X. ± 0.30	.XXX ±	UNIT	林錫錦	DATE
.X ± 0.25	.X° ± 4°	MM	林錫錦	05/17 06'
.XX ± 0.20	.X° ± 4°	SIZE	林錫錦	DATE
		A4		05/17 06'

DWG. NO.	TITLE	REV.
E: \NEW\CDWG\F\FS1Y.DWG	2.0X2.0mm BAORD STACKER (成品規格圖)	59
PARTS NO.		SHEET
XF-XX-X-C/D/E-*-*		1/2