

SQPOFZ-XXS2-X-X-S05-*

No. of Contacts	DIMENSIONS		REMARK	
	A	B	W/O peg	With peg
6	2.54	4.27	○	○
8	3.81	5.64	○	○
10	5.08	6.81	○	○
12	6.35	8.08	○	○
14	7.62	9.35	○	○
16	8.89	10.62	○	○
18	10.16	11.89	○	○
20	11.43	13.16	○	○
22	12.70	14.43	○	○
24	13.97	15.70	○	○
26	15.24	16.97	○	○
28	16.51	18.24	○	○
30	17.78	19.51	○	○
32	19.05	20.78	○	○
34	20.32	22.05	○	○
36	21.59	23.32	○	○
38	22.86	24.59	○	○
40	24.13	25.86	○	○
42	25.40	27.13	○	○
44	26.67	28.40	○	○
46	27.94	29.67	○	○
48	29.21	30.94	○	○
50	30.48	32.21	○	○
52	31.75	33.48	○	○
54	33.02	34.75	○	○
56	34.29	36.02	○	○
58	35.56	37.29	○	○
60	36.83	38.56	○	○
62	38.10	39.83	○	○
64	39.37	41.10	○	○
66	40.64	42.37	○	○
68	41.91	43.64	○	○
70	43.18	44.91	○	○
72	44.45	46.18	○	○
74	45.72	47.45	○	○
76	46.99	48.72	○	○
78	48.26	49.99	○	○
80	49.53	51.26	○	○
82	50.80	52.53	○	○
84	52.07	53.80	○	○
86	53.34	55.07	○	○
88	54.61	56.34	○	○
90	55.88	57.61	○	○
92	57.15	58.88	○	○
94	58.42	60.15	○	○
96	59.69	61.42	○	○
98	60.96	62.69	○	○
100	62.23	63.96	○	○

Number of Contacts

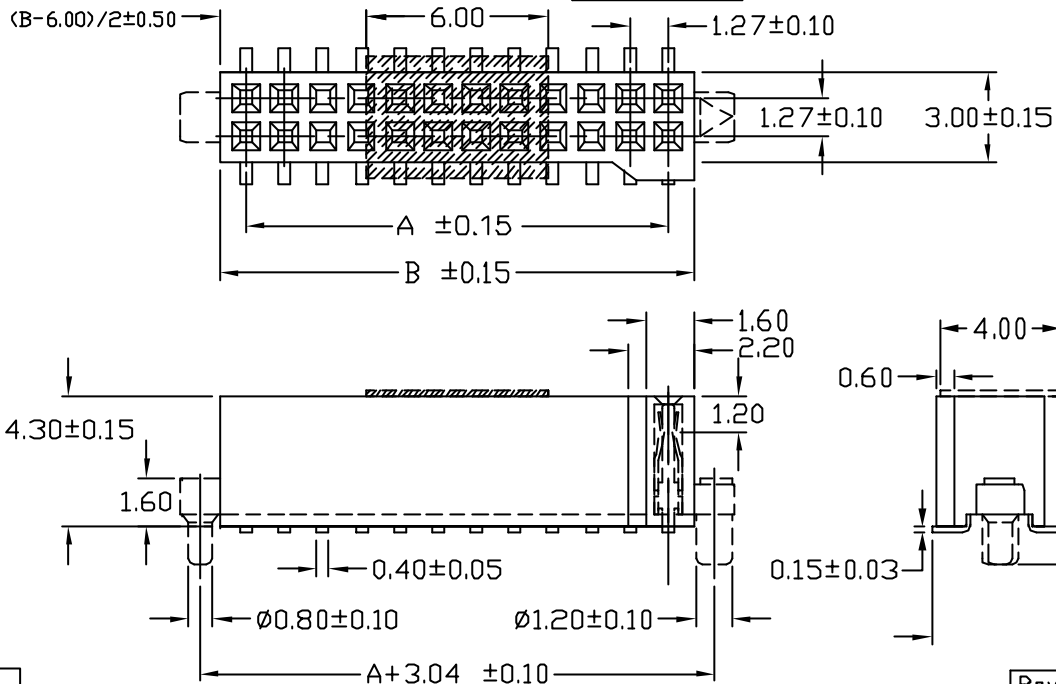
Contact Plating

Definition	Code
○ Tin plated:	A
⊙ Gold plated:	
flash B 15μ"	F
10μ" E 30μ" J	
⊙ Duplex plating:	
flash K 15μ" P	
10μ" N 30μ" U	
⊙ Standard: B	
⊙ Prefix "V" means lead free plating	

NULL: TUBE(W/O FILM)
C: FILM+REEL
0: W/O Locating peg
1: With Locating peg

SPECIFICATIONS

Current Rating: 1 Amps
Insulator resistance: 5000 Megohms min.
Dielectric withstanding: AC 500 V
Operating Temperature: -40°~+105°C
Max Processing Temp: 230° for 30~60 seconds (260° for 10 seconds)
Contact Material: Phosphor bronze
Insulator Material: Polyester, UL 94V-0
Retention Force: 200 g Min Per Pin.
Insertion Force: 250 g Max Per Pin.
Withdrawal Force: 20 g Min Per Pin.



Recommended PCB Layout (PCB TOLERANCE ± 0.05)

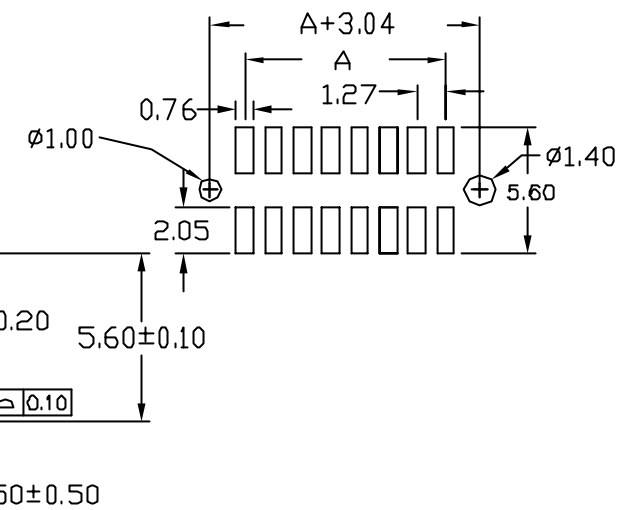
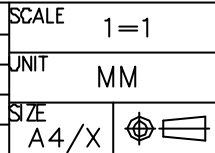


Diagram	Molding description
○	mass production & assemble mold
⊙	sample & assemble mold
⊕	mass production & fix mold
⊕	sample & fix mold

Rev.	ECN Number	Description	Drawn	Date
3	EC2-490041	新增電鍍碼器頂	洪銀雲	09/03/04'
4	EC2-4B0039	新增電鍍碼-N	陳美竹	11/03 04'
5	EC2-4C0742	新增包裝代碼	陳銀雲	12/31 04'



GENERAL TOLERANCE		SCALE	ORIGINAL DRAWN	DATE
XX. ± 0.50	XXX. ±	1=1	林秋蘭	19-11-02'
X. ± 0.30	.XXX ±	UNIT	江坤容	DATE 11/03 04'
.X ± 0.25	X' ± 4'	MM	林錫錦	DATE 11/03 04'
.XX ± 0.20	.X' ± 4'	SIZE		



DWG. NO.	TITLE	REV.
1-18	1.27x1.27mm SMD SOCKET (成品規格圖)	5
F:\DWG\CDWG\SQPOFZ\QPOFZMOD.DWG		
SQPOFZ-XXS2-X-X-S05-*		1/1